



# ARMCX3 Polyclonal Antibody

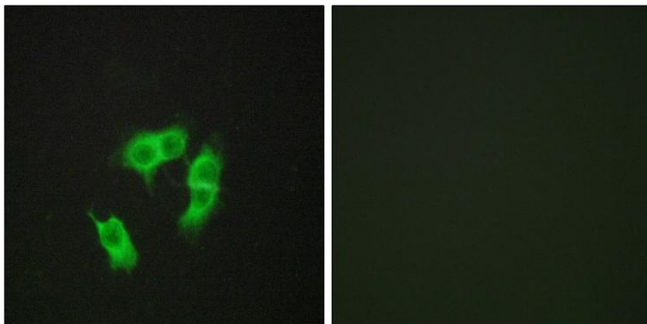
<b>Catalog No</b>	YP-Ab-03716
<b>Isotype</b>	IgG
<b>Reactivity</b>	Human;Mouse;Rat
<b>Applications</b>	WB;IHC;IF;ELISA
<b>Gene Name</b>	ARMCX3
<b>Protein Name</b>	Armadillo repeat-containing X-linked protein 3
<b>Immunogen</b>	The antiserum was produced against synthesized peptide derived from human ARMX3. AA range:291-340
<b>Specificity</b>	ARMCX3 Polyclonal Antibody detects endogenous levels of ARMCX3 protein.
<b>Formulation</b>	Liquid in PBS containing 50% glycerol, 0.5% BSA and 0.02% sodium azide.
<b>Source</b>	Polyclonal, Rabbit,IgG
<b>Purification</b>	The antibody was affinity-purified from rabbit antiserum by affinity-chromatography using epitope-specific immunogen.
<b>Dilution</b>	Western Blot: 1/500 - 1/2000. Immunohistochemistry: 1/100 - 1/300. Immunofluorescence: 1/200 - 1/1000. ELISA: 1/5000. Not yet tested in other applications.
<b>Concentration</b>	1 mg/ml
<b>Purity</b>	≥90%
<b>Storage Stability</b>	-20°C/1 year
<b>Synonyms</b>	ARMCX3; ALEX3; BM-017; Armadillo repeat-containing X-linked protein 3; ARM protein lost in epithelial cancers on chromosome X 3; Protein ALEX3
<b>Observed Band</b>	38kD
<b>Cell Pathway</b>	Mitochondrion outer membrane ; Single-pass membrane protein . Cytoplasm . Nucleus .
<b>Tissue Specificity</b>	Bone marrow,Brain,Epithelium,Kidney,Liver,Retina,Skin,Testis,
<b>Function</b>	similarity:Contains 3 ARM repeats.,
<b>Background</b>	armadillo repeat containing, X-linked 3(ARMCX3) Homo sapiens This gene encodes a member of the ALEX family of proteins which may play a role in tumor suppression. The encoded protein contains a potential N-terminal transmembrane domain and a single Armadillo (arm) repeat. Other proteins containing the arm repeat are involved in development, maintenance of tissue integrity, and tumorigenesis. This gene is closely localized with other family members on the X chromosome. Three transcript variants encoding the same protein have been identified for this gene. [provided by RefSeq, Jul 2008],

**matters needing attention**

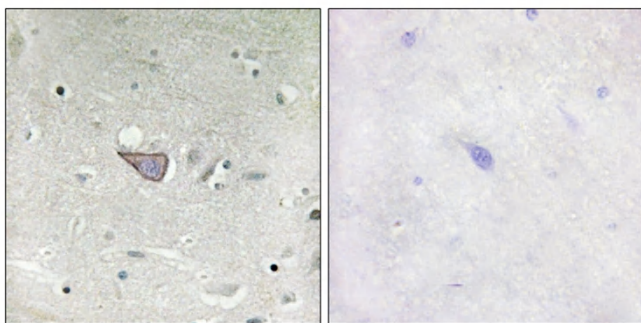
Avoid repeated freezing and thawing!

**Usage suggestions**

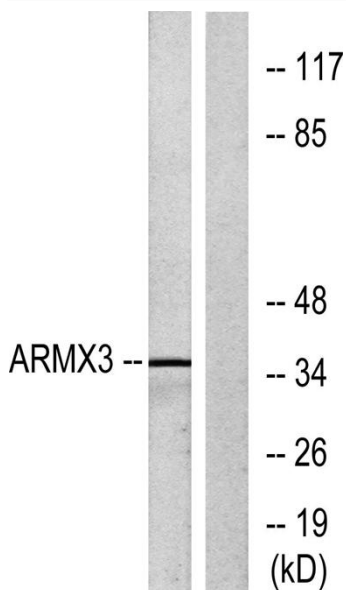
This product can be used in immunological reaction related experiments. For more information, please consult technical personnel.

**Products Images**

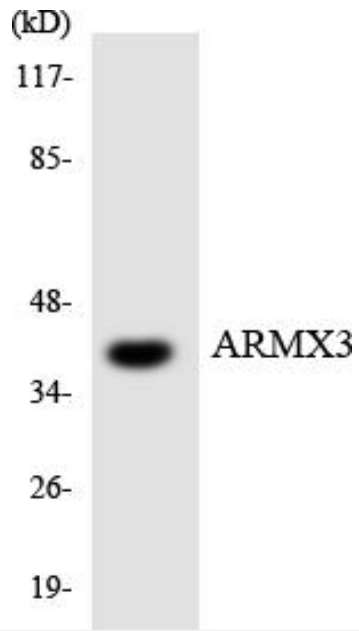
Immunofluorescence analysis of HepG2 cells, using ARMX3 Antibody. The picture on the right is blocked with the synthesized peptide.



Immunohistochemistry analysis of paraffin-embedded human brain tissue, using ARMX3 Antibody. The picture on the right is blocked with the synthesized peptide.



Western blot analysis of lysates from K562 cells, using ARMX3 Antibody. The lane on the right is blocked with the synthesized peptide.



Western blot analysis of the lysates from COLO205 cells using ARMX3 antibody.